

H I G H P R E S S U R E S P E C I A L

9 0 b a r - 9 0 0 b a r



Innovative Valve Technology

VALVES UP TO 500 BAR

Type 1/921

- 3/2-way valve, direct-pressure controlled, poppet design
- Pressure range: 0-500 bar
- Universal valve function
- Thread connection: G $\frac{1}{4}$ - G1, DN10 - DN22
- Valves of this type are also available with the function „open by spring power“. Additionally, a double-acting piston actuator allows a bi-directional flow.

Applications e.g.: water installations on vessels, high pressure pumps, paper processing industry for press beams, water and oil hydraulics, nitrogen applications (depending on the seal material), press- and watergate control



VALVES UP TO 250 BAR

Type 3/045

- 3/2-way direct acting solenoid slide valve
- Pressure range: 0-250 bar
- Universal valve function
- Thread connection: G $\frac{1}{4}$ -G1, DN10 - DN22

Applications e.g.: water installations on vessels, high pressure pumps, paper processing industry for press beams, water and oil hydraulics, nitrogen applications (depending on the seal material), press- and watergate control

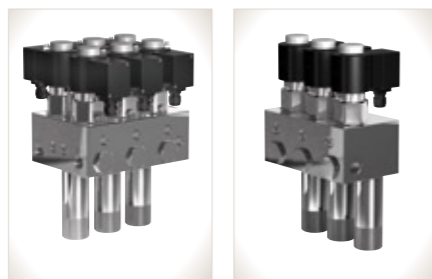


VALVES UP TO 450 BAR

Type 2/529

- 2/2-way pilot operated valve, piston design
- Pressure range: 1-450 bar
- Thread connection: G $\frac{1}{8}$ -G2, DN6 - DN50
- This valve is available as single valve, threefold valve block or sixfold valve block. Non-return valves as well as two adjustable overflow valves are integrated in the valve blocks.
- In special design the valve is also suitable for high temperatures.

Applications e.g.: natural gas filling stations, hydrogen filling stations



Type 2/943

- 2/2-way direct acting ball valve
- Pressure range: 0,5-200 bar
- Thread connection: G $\frac{1}{8}$, M12 x 1,5 DN0,6 - DN2,0

The reset is carried out by the medium pressure. Especially capable for applications with small circuit times, linear flow rate, dose applications, very viscous media and robotic applications.

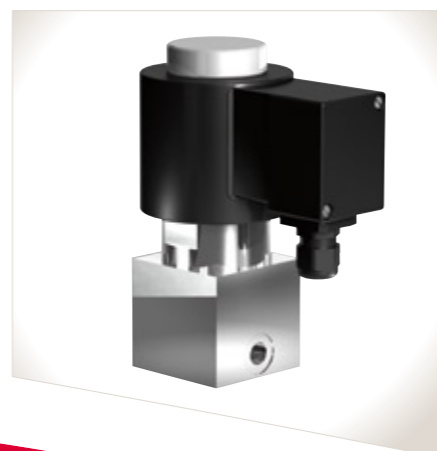
Applications e.g.: adhesive dosing, lubrication technology, automotive industry, pharmaceutical industry



Type 52

- 2/2-way direct acting valve, poppet design
- Pressure range: 0-450 bar
- Thread connection: G $\frac{1}{8}$ -G $\frac{1}{2}$, DN1 - DN6
- Valves of this type are especially suitable for smaller flow rates.

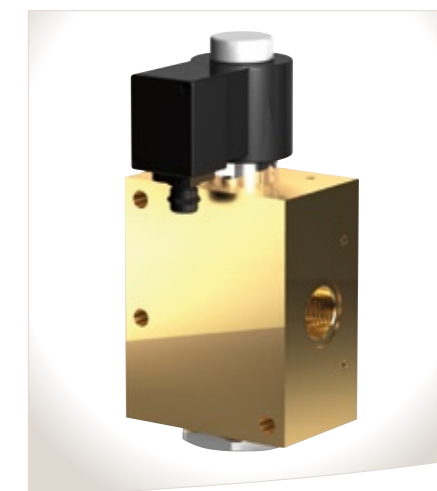
Applications e.g.: car tank systems



Type 46

- 2/2-way pilot operated valve, piston design
- Pressure range: 1-200 bar
- Thread connection: G $\frac{1}{4}$ -G1, DN8 - DN25

Applications e.g.: in fire fighting systems



Type 3/071

- Pilot operated solenoid valve up to 900 bar
- For hydrogen and other gaseous media

■■ VALVES UP TO 100 BAR

Type 75

- 3/2-way direct acting valve, poppet design
- Pressure range: 0-100 bar
- Thread connection: G $\frac{1}{4}$, DN1,0 - 5,0

Applications e.g.: water hydraulics, pneumatic



Type 1/041

- 2/2-way force pilot operated valve, piston design
- Pressure range: 0-100 bar
- Thread connection: G $\frac{1}{4}$ -G2 or with flange connection DN15 - DN100

Applications e.g.: paper conversion technology, plant construction, steel production in blast furnaces, gardening and cultivation for pulverising

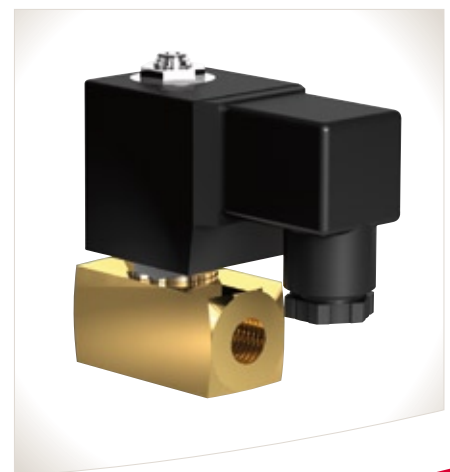


■■ VALVES UP TO 90 BAR

Type 72

- 3/2-way direct acting valve, poppet design
- Pressure range: 0-90 bar
- Thread connection: G $\frac{1}{8}$ -G $\frac{1}{2}$, DN1,0 - DN6,0

Applications e.g.: pneumatic as e.g. control valve for cylinders



GSR Ventiltechnik GmbH & Co. KG

Im Meisenfeld 1 • D-32602 Vlotho, Germany
P.O. Box 2060 • D-32595 Vlotho, Germany

Phone +49 5228 779-0
Fax +49 5228 779-190

info@ventiltechnik.de
www.ventiltechnik.de